



Diagnostic Images

Diagnostic Images: CT Thorax Spotters

Meenakshi Paramasivan *

Department of Radiology, Kauvery Hospital, Tirunelveli, Tamil Nadu

*Correspondence

Clinical Images



Fig (1): Bilateral lung upper lobe cavities, fibrotic strands, calcified granulomata, volume loss - Reactivation of Koch's

Citation: Meenakshi Paramasivan. Diagnostic Images: CT Thorax Spotters. *Kauverian Med J.* 2026;3(4):66-69.

Academic Editor: Dr. Venkita S. Suresh

ISSN: 2584-1572 (Online)



Copyright: © 2026 by the authors. Submitted for possible open access publication under the terms and conditions.



Fig (2): Consolidation with cavitation left lower lobe - Active Koch's



Fig (3): Extensive bilateral acute pneumonitis with cavitation - Active Pulmonary Koch's

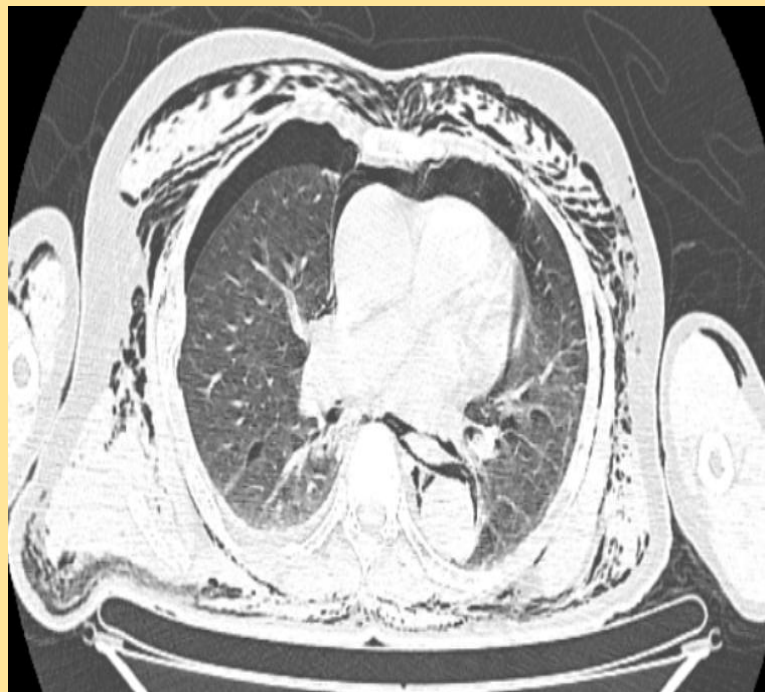


Fig (4): Bilateral pneumothorax pneumomediastinum and surgical emphysema due to rib fractures



Fig (5): Broncholith in right lower lobe bronchus - Distal Bronchocele - Collapse consolidation

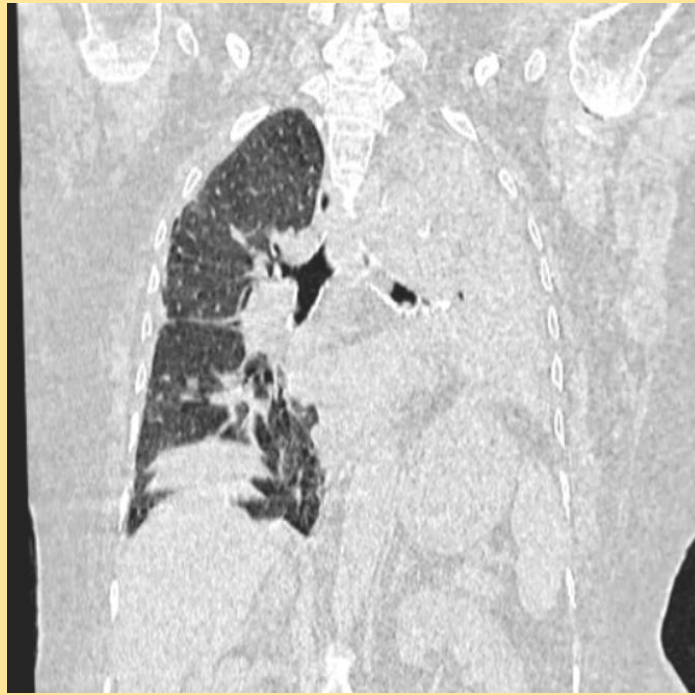


Fig (6): Occlusive mucous plug in left main bronchus with complete collapse of left lung